

Word of the Day

Summer Term 2025

Week 32 – 5th May 2025



'Words unlock the doors to a world of understanding...'

This Week's Words

Grasshopper

arena

battle

continue

flee

office

Shinobi

agitate

catastrophe

cooperate

detest

estimate



VOCABULARY NINJA

Grasshopper (Tier 1)

arena

beware

continue

flee

office



VOCABULARY NINJA

Shinobi (Tier 2)

agitate

catastrophe

cooperate

detest

estimate



VOCABULARY NINJA



Grasshopper Word of the Day

Word of the Day:

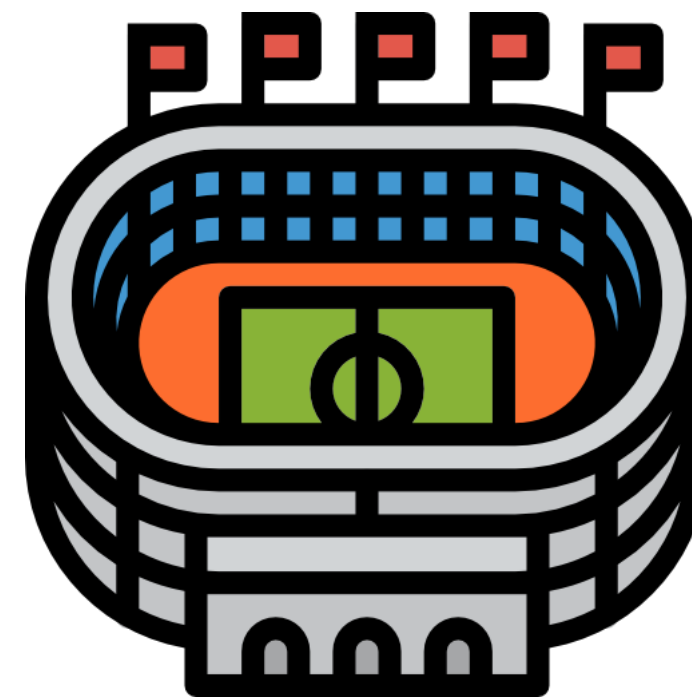
Pronunciation / Syllables

arena
(a-re-na)

Word Class
(noun)

Definition:

An arena is a place where sports, entertainments, and other public events take place. It has seats around it where people sit and watch.



The class were looking forward to visiting the arena.

Synonym:

park

realm

Antonym:

Prefix / Suffix:

-s

Rhyme:

Athena

hyena

Link Word:

public

fierce



Grasshopper Word of the Day

Word of the Day:

beware
(be-ware)

Word Class
(verb)

Pronunciation / Syllables

Definition:

If you tell someone to beware of a person or thing, you are warning them that the person or thing may harm them or be dangerous.



The class were told to **beware** strangers.

Synonym:

heed

avoid

Antonym:

ignore

neglect

Prefix / Suffix:

Rhyme:

there

where

Link Word:

rightfully

always



Grasshopper Word of the Day

Word of the Day:

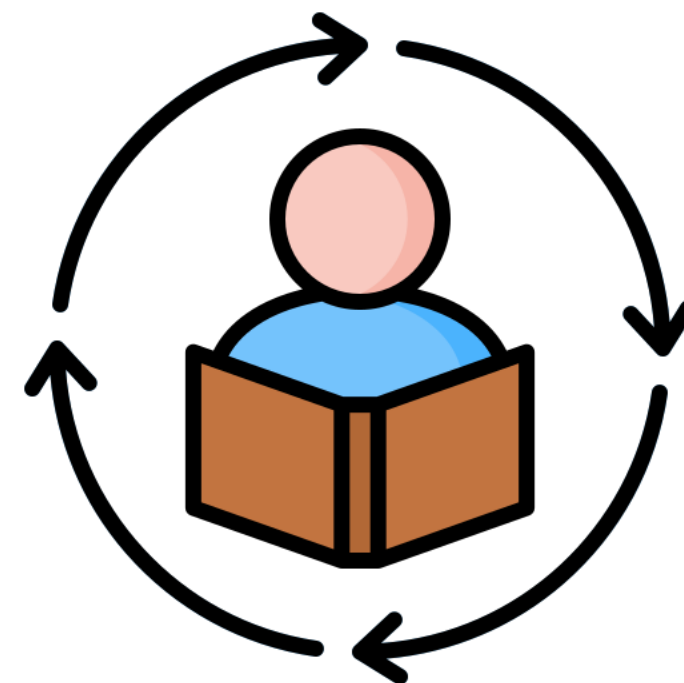
continue
(con-tin-ue)

Word Class
(verb)

Pronunciation / Syllables

Definition:

If someone or something continues to do something, they keep doing it and do not stop.



Mrs Hardy asked the class to **continue** to read.

Synonym:

persist
promote

Antonym:

depart
retreat

Prefix / Suffix:

dis-
-ed

Rhyme:

Link Word:

boldly
reluctantly



Grasshopper Word of the Day

Word of the Day:

Pronunciation / Syllables

flee
(flee)

Word Class
(verb)

Definition:

If you flee from something or someone, or flee a person or thing, you escape from them.



In the story, the mouse tried to **flee** before the cat saw it.

Synonym:

depart

leave

Antonym:

arrive

stay

Prefix / Suffix:

-ing

-s

Rhyme:

he

we

Link Word:

quickly

bravely



Grasshopper Word of the Day

Word of the Day:

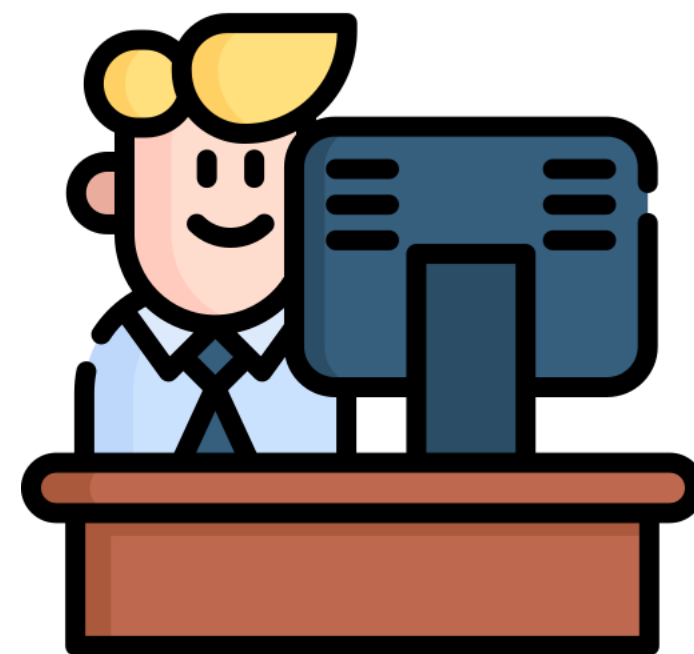
Pronunciation / Syllables

office
(of-fice)

Word Class
(noun)

Definition:

An office is a room or a part of a building where people work sitting at desks.



Greg was called to the headteacher's office.

Synonym:

room

Antonym:

Prefix / Suffix:

open-

-s

Rhyme:

Link Word:

quiet

cluttered



Shinobi Word of the Day

Word Class
(verb)

Word of the Day:

Pronunciation / Syllables

agitate
(ag-i-tate)

Definition:

If something agitates you, it worries you and makes you unable to think clearly or calmly.



Sally began to **agitate** Anvi by tapping her pencil.

Synonym:

disturb
rock

Antonym:

calm
sooth

Prefix / Suffix

-ed
-ation

Rhyme:

exaggerate

Link Word:

fiercely
someone



Shinobi Word of the Day

Word of the Day: **catastrophe**

Word Class
(noun)

Pronunciation / Syllables

(*ca-tas-tro-phe*)

Definition:

A catastrophe is an unexpected event that causes great suffering or damage.



Kai thought it was a **catastrophe** forgetting his homework.

Synonym:

devastation

fiasco

Antonym:

joy

miracle

Prefix / Suffix:

-s

Rhyme:

Link Word:

unexpected

complete



Shinobi Word of the Day

Word Class
(verb)

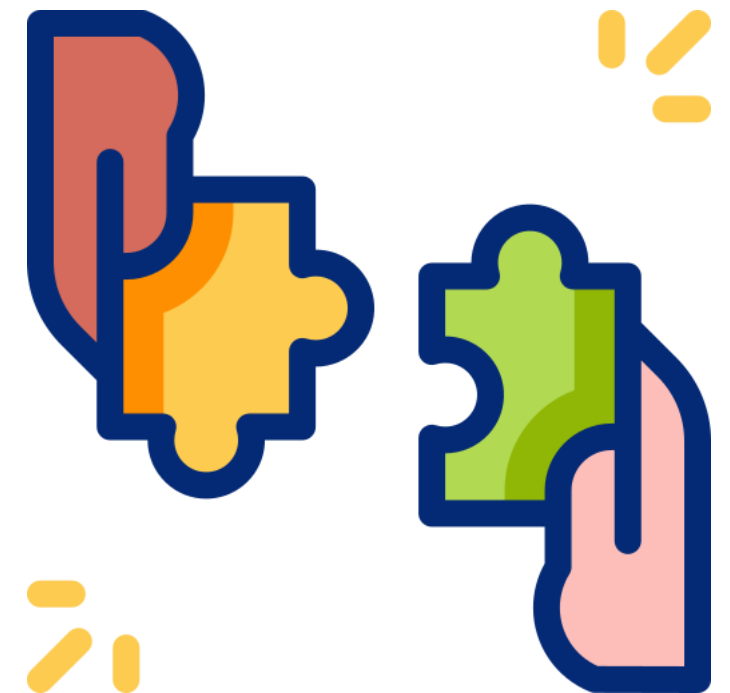
Word of the Day: **cooperate**

Pronunciation / Syllables

(co-op-er-ate)

Definition:

If you cooperate with someone, you work with them or help them for a particular purpose.



Gill likes to **cooperate** with Ed on class projects.

Synonym:

aid

conspire

Antonym:

hinder

oppose

Prefix / Suffix:

-ed

-ation

Rhyme:

operate

Link Word:

fully

happily



Shinobi Word of the Day

Word of the Day:

Pronunciation / Syllables

detest
(de-test)

Word Class
(verb)

Definition:

If you detest someone or something,
you dislike them very much.



Gail **detested** lasagne for school lunch.

Synonym:

despise

loath

Antonym:

admire

like

Prefix / Suffix:

-ed

-able

Rhyme:

best

request

Link Word:

absolutely

openly



Shinobi Word of the Day

Word Class
(verb)

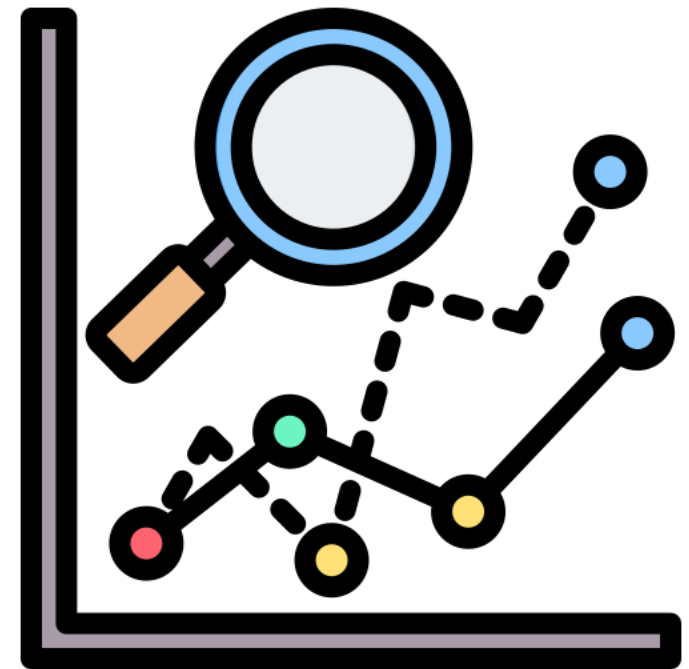
Word of the Day:

estimate
(es-ti-mate)

Pronunciation / Syllables

Definition:

If you estimate a quantity or value,
you make an approximate
judgment or calculation of it.



The class tried to **estimate** how many cars they would see.

Synonym:

assess

predict

Antonym:

disregard

ignore

Prefix / Suffix:

under-

-ation

Rhyme:

Link Word:

original

rough

Vocabulary Laboratory



Describe / Definition:

Use it in a sentence:

Focus Word (write below):

Word Class:

Synonyms:

(words with same / similar meaning)

Antonyms:

(words with opposite meaning)

Draw your sentence:

Rhymes:

(words that sound the same)

Link Words:

(Example: football = pitch, team, player)

Vocabulary Visualiser

Draw the
Grasshopper words
and bring them to life.



Word: arena

Word: continue

Word: beware

Word: flee



Vocabulary Visualiser

Draw the **Shinobi**
words and bring
them to life.



Word: catastrophe

Word: detest

Word: cooperate

Word: estimate



Matching Meanings

Draw lines from the **Grasshopper** words to their definitions.



Grasshopper Word

Grasshopper Definitions

arena

An *** is a room or a part of a building where people work sitting at desks.



beware

An *** is a place where sports, entertainments, and other public events take place. It has seats around it where people sit and watch.



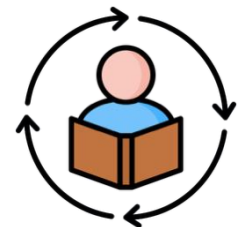
continue

If you *** from something or someone, or *** a person or thing, you escape from them.



flee

If someone or something *** to do something, they keep doing it and do not stop.



office

If you tell someone to *** of a person or thing, you are warning them that the person or thing may harm them or be dangerous.



Matching Meanings

Draw lines from the **Shinobi** words to their definitions.



Shinobi Word

Shinobi Definitions

agitate

If you *** with someone, you work with them or help them for a particular purpose.



Display Slips

The following slides are for classroom display. As you teach each Word of the Day, words can be displayed in the classroom to enable pupils to use the taught vocabulary in an independent manner.




worried



opini

asure

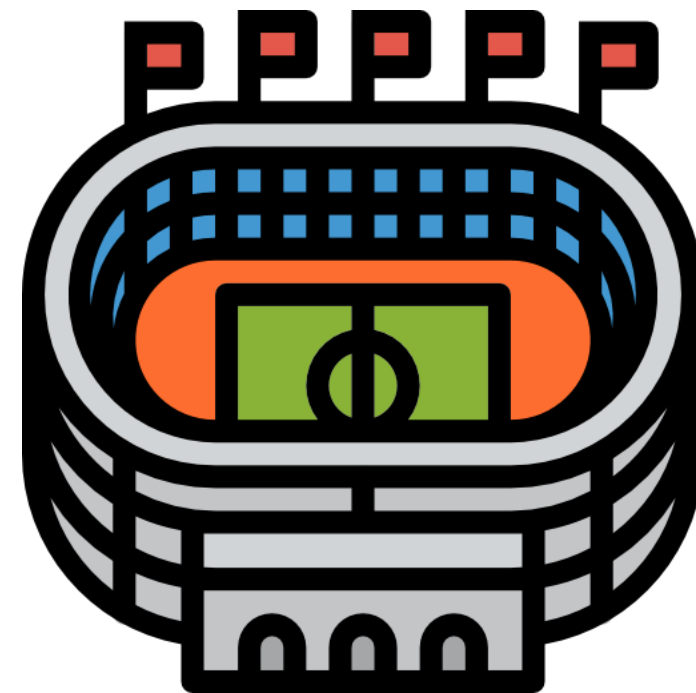


dia





arena

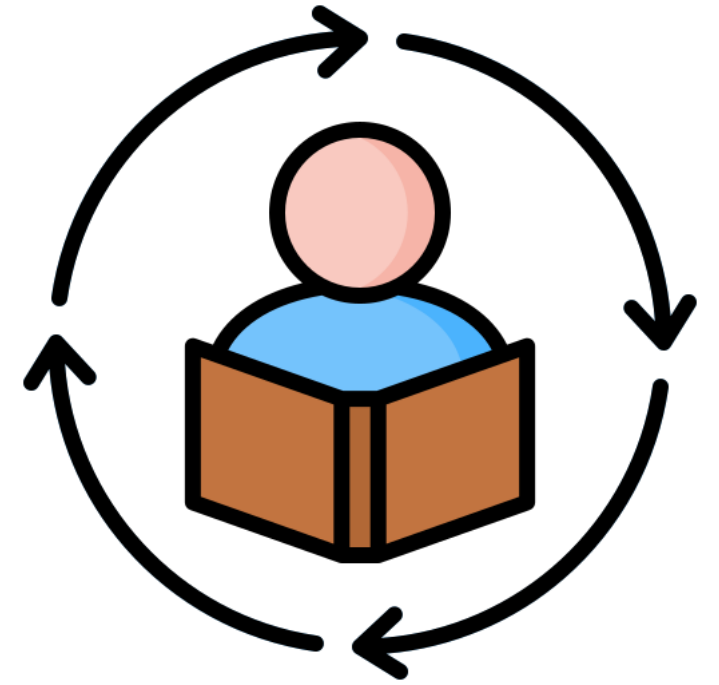


beware





contain



flee





office



agitate





catastrophe

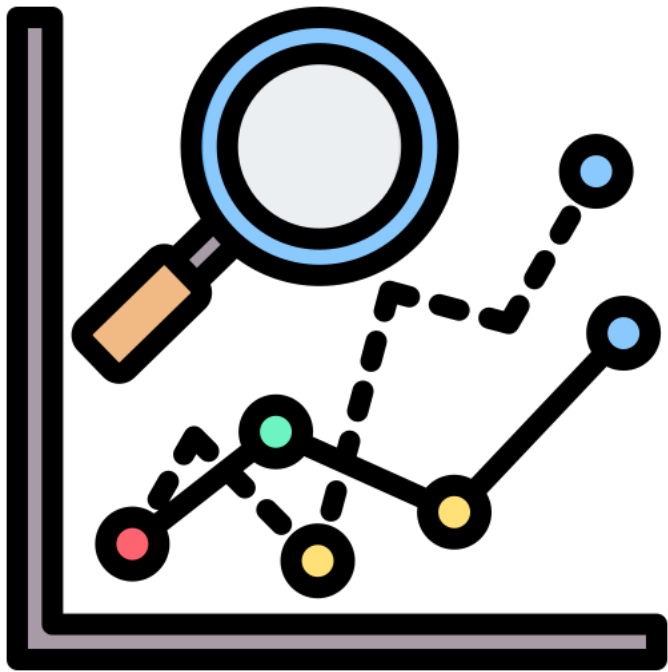


cooperate





detest



estimate





Font Variation

The following display slips contain the same words, but have a more regular font, which have a more regular formation of 'a' and 'g'. Futura is the name of the font.




worried



opini

asure

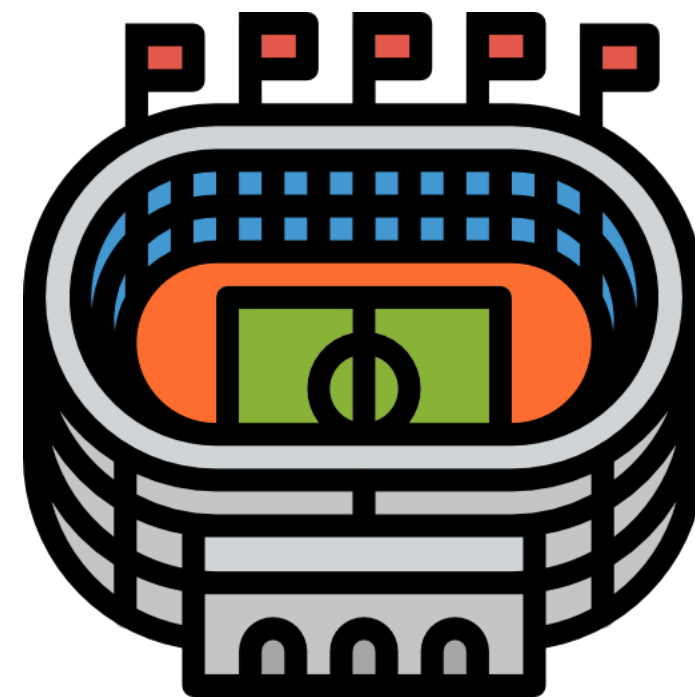


dia





arena

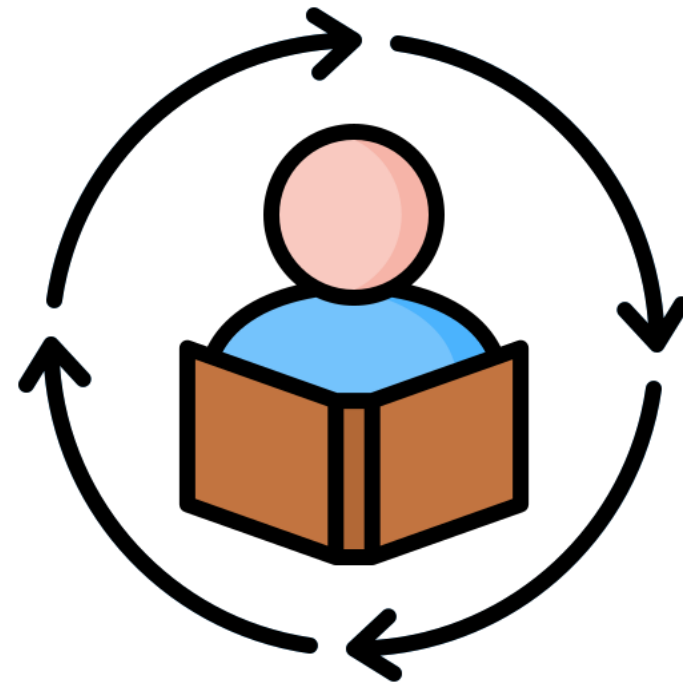


beware





continue



flee





office

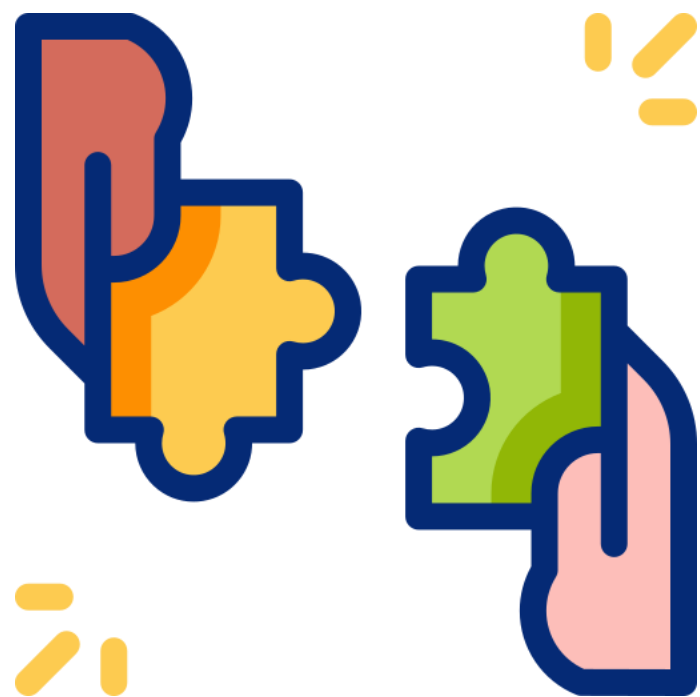


agitate





catastrophe

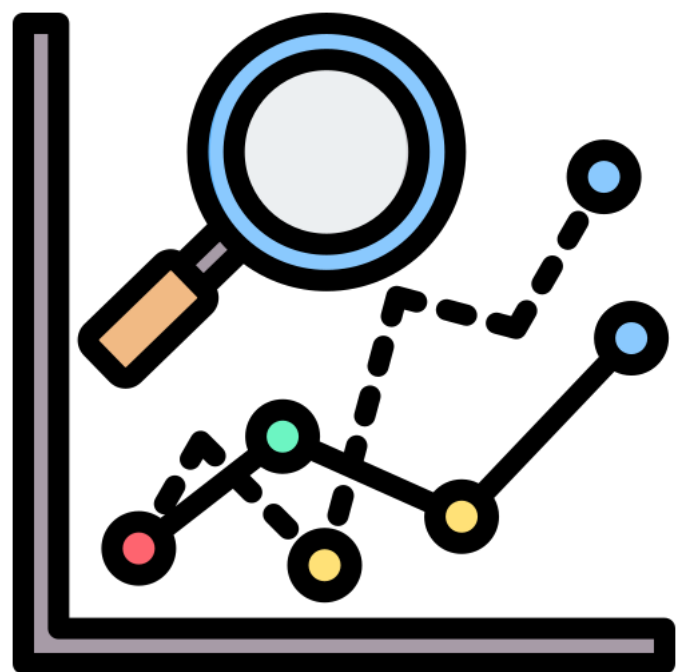


cooperate





detest



estimate

